

Variable Flow Heaters Ideally Suited For Hose Station Service

Steam Injection Liquid Heating Systems

If your plant requires multiple hose stations...

The Pick Variable Flow Heater provides a central heating system requiring only one hot water line for multiple use points. Mixing tees require both a cold water line and a steam line to each station, which means additional costs for equipment and installation.

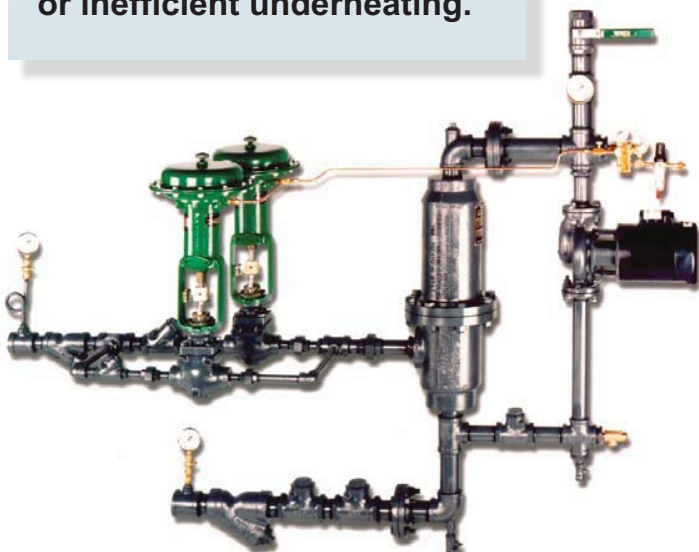
No operator adjustments at point of use eliminates the risk and cost of overheating or inefficient underheating.

Benefits

- Safe- No operator adjustments at use point.
- Precise, accurate temperature control- automatically maintains preset temperature within 3°F regardless of changes in steam or water pressure, water flow or incoming water temperature.
- Wide turndown- stable operation during both peak demand or low loads.
- Low liquid pressure drop
- Central heating system- less costly than individual units
- Energy Efficient- 100% heat transfer

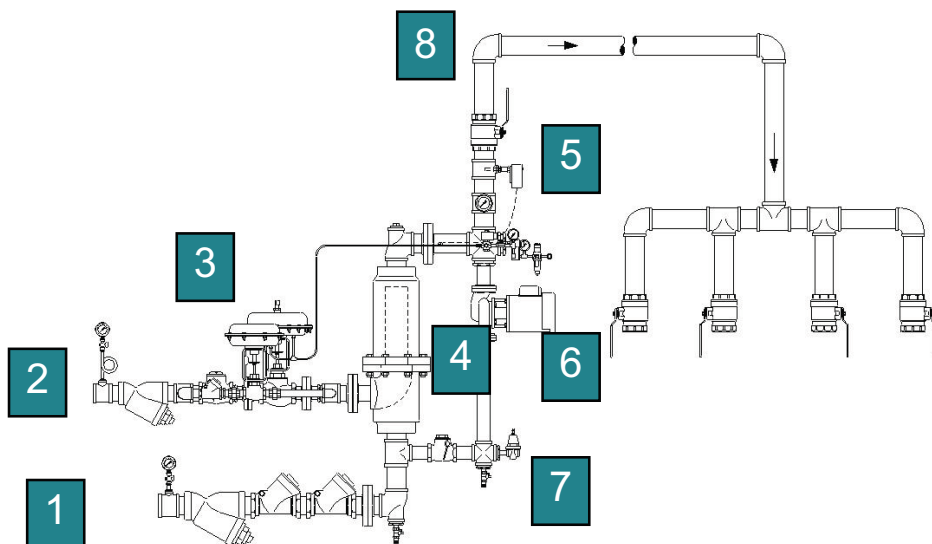
Features

- Ideal for feeding high pressure boost pumps
- Standard Temperature Override Package ensures safety at point of use.
- Complete instrumentation available
- Over 55 years of experience in design, installation and service of steam injection heating systems



Pick Variable Flow Heating System Components

- 1** Water Inlet
- 2** Steam Inlet
- 3** Modulating steam control valve precisely controls steam flow based on outlet temperature. Dual control valve option allows wider range of operation (turndown exceeding 10:1)
- 4** Pick Heater
- 5** Pneumatic temperature controller, immediately downstream of heater, responds quickly to changes in water flow rate to maintain preset temperature.
- 6** Pump circulates water within the system to promote thorough mixing and allow stable operation under variable conditions.
- 7** Relief valve allows heater to maintain water at preset temperature during idle times.
- 8** Temperature override package prevents discharge of overheated water (includes automatic temperature switch and air solenoid valve).



Say "Yes" to PICK Heaters

	PICK Heaters	Mixing Tees
Automatic Temperature Control	Yes	No
No Steam with Loss of Water	Yes	Yes
Responds Automatically to Varying Pressure	Yes	No
100% Heat Transfer Efficient	Yes	Yes
Can Be Used On Water Pressure Less than 50 PSI	Yes	Varies By Manufacturer
Eliminates need for operator adjustments	Yes	No