

KEMCO SYSTEMS

RM 99 READY MIX WATER HEATERS

KEMCO RM 99

DIRECT CONTACT WATER HEATER

KEMCO RM 99 is a total hot water system package, specifically engineered and designed for the Ready Mix Industry.

KEMCO Direct Contact Water Heaters are the solution to your hot water requirements. The technology from **KEMCO** guarantees 99.7% efficiency and provides instantaneous hot water on demand.

Operating at atmospheric pressure, the unit does not have to meet the regulations of pressurized vessels and it is available with total programmable logic controls (PLC).

Pre-piped Package Systems supply the ready mix plant with a ready to go set up. This service will reduce installation time and costs.

KEMCO heaters are sized based on total yards per hour in peak production time. This insures that the heater will generate the hot water needed for batching operations. The chart below will help sizing the **KEMCO RM 99** direct contact water heater for each application:



100°F Temperature Rise				130°F Temperature Rise			
CAPACITY	BTU REQUIRED/HR	BTU/YR SAVED	\$/YR SAVED	CAPACITY	BTU REQUIRED/HR	BTU/YR SAVED	\$/YR SAVED
20-40 yds/hr	1.2 mmbtu	336 mmbtu	\$2,688	20-40 yds/hr	1.6 mmbtu	448 mmbtu	\$3584
40-60 yds/hr	1.8 mmbtu	504 mmbtu	4,032	40-60 yds/hr	2.3 mmbtu	644 mmbtu	5152
60-80 yds/hr	2.4 mmbtu	671 mmbtu	5,368	60-80 yds/hr	3.1 mmbtu	868 mmbtu	6944
80-100 yds/hr	3.0 mmbtu	840 mmbtu	6,720	80-100 yds/hr	3.8 mmbtu	1,064 mmbtu	8512
100-120 yds/hr	3.5 mmbtu	980 mmbtu	7,840	100-120 yds/hr	4.6 mmbtu	1,288 mmbtu	10,304
120-140 yds/hr	4.1 mmbtu	1,148 mmbtu	9,184	120-140 yds/hr	5.4 mmbtu	1,512 mmbtu	12,096
140-180 yds/hr	5.3 mmbtu	1,484 mmbtu	11,872	140-180 yds/hr	6.9 mmbtu	1,932 mmbtu	15,456
180-220 yds/hr	6.5 mmbtu	1,820 mmbtu	14,560	180-220 yds/hr	8.4 mmbtu	2,352 mmbtu	18,816
220-260 yds/hr	7.6 mmbtu	2,128 mmbtu	17,024	220-260 yds/hr	9.9 mmbtu	2,772 mmbtu	22,176



SINCE

1969



R & B WHITEMAN (Sales) Pty Ltd ■ PO Box 1214, Hawksburn ■ VIC 3142 AUSTRALIA
 P: 61 3 9525 0222 ■ F: 61 3 9525 0244 ■ info@rbwhiteman.com.au ■ www.rbwhiteman.com.au

RM 99 READY MIX WATER HEATERS

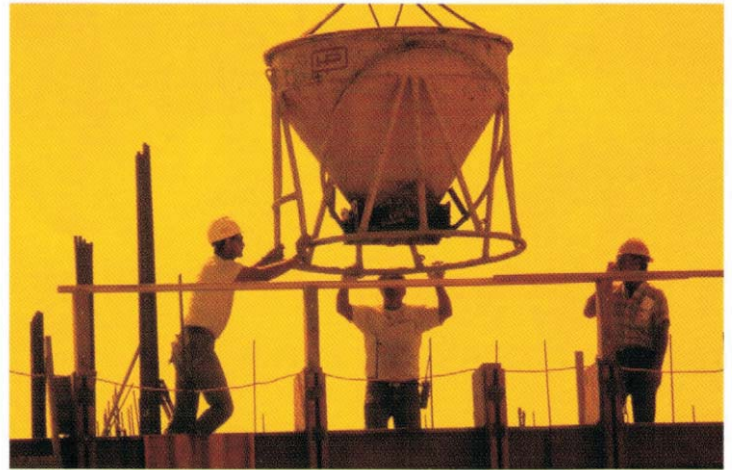
KEMCO RM 99

STAINLESS STEEL CONSTRUCTION - High alloy stainless steel unit assures long life. Kemco also incorporates stainless steel water-cooled burner discharge sleeve into every unit.

INSTANTANEOUS HOT WATER - Kemco ensures that no matter what your operating temperature, water will be delivered instantly.

NON-PRESSURE VESSEL - Does not require licensed operator or high-pressure insurance. This feature eliminates steam boilers entirely, eliminating boiler feed chemical and their high maintenance costs.

ALLEN-BRADLEY® ADVANCED PROCESS LOGIC CONTROLLER - Kemco heaters are available with state of the art systems that will operate and control all water heater functions.



ON-SITE EVALUATION AND TECHNICAL SUPPORT
Kemco field engineers evaluate your plant needs, on-site, from water supply to existing equipment to processing goals and we include factory start-up and training with every system you install, guaranteed!!

THE KEMCO DIFFERENCE:

99.7% EFFICIENCY - Guaranteed

STACK TEMPERATURES - Below 60°F

STAINLESS STEEL CONSTRUCTION - Assures long life

INSTANTANEOUS HOT WATER - Reduces storage tank

PRECISE TEMPERATURE - up to 185°F

PROVEN RELIABILITY - Repeat customers over and over

NON-PRESSURE VESSEL - No insurance or licensed operator required

TOTAL WATER SYSTEMS - For central plant and truck batch plants



SINCE

1969



R & B WHITEMAN (Sales) Pty Ltd ■ PO Box 1214, Hawksburn ■ VIC 3142 AUSTRALIA
P: 61 3 9525 0222 ■ F: 61 3 9525 0244 ■ info@rbwhiteman.com.au ■ www.rbwhiteman.com.au